

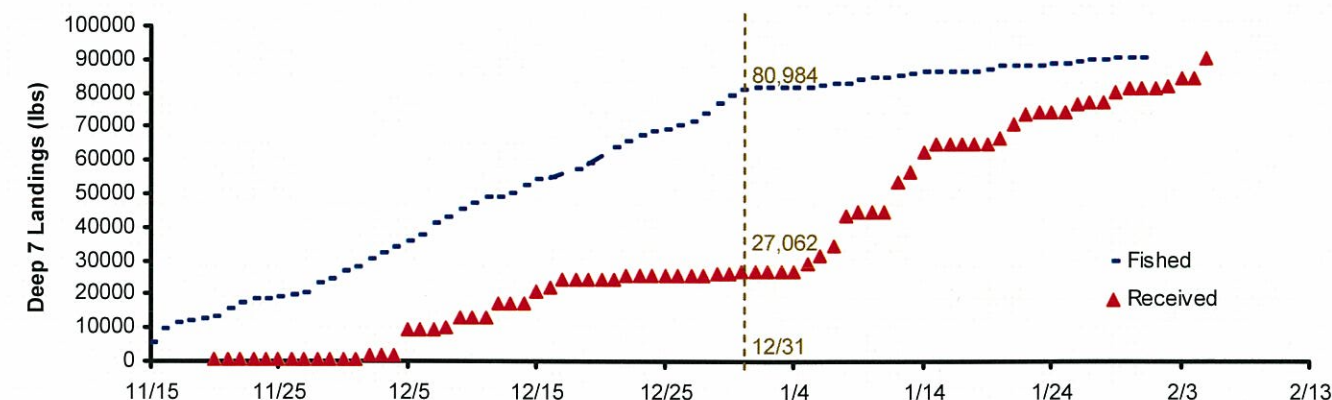
Division of Aquatic Resources
 Dept. of Land & Natural Resources
 1151 Punchbowl Street Room 330
 Honolulu, Hawaii 96813

BOTTOMFISH NEWS



Mahalo Commercial MHI Bottomfish Fishers & Dealers!

Commercial bottomfish fishers and dealers have started out the season on a good note: big landings and high report compliance. Your cooperation is greatly appreciated and essential for bottomfish management. Commercial fishing and dealer reports are still due on the 10th day of each month; DAR really appreciates those that submit fishing reports after each trip and dealers that submit reports weekly. As of February 5, 2009, 314 fishers have reported catching 90,594 pounds of deep 7 bottomfish, which is 38% of the proposed total allowable catch (TAC) of 241,000 pounds. For weekly updates check www.hawaiibottomfish.info. Please continue to submit your reports in a timely manner promoting better fisheries management.



The above graph shows the dates commercial MHI bottomfish fishers reported catching pounds of Deep 7 bottomfish compared with the dates that the catch data was received by DAR from November 15, 2008 to February 5, 2009. The graph illustrates the time lag in data between the date fished and the time that DAR receives the fishing reports. For example by December 31, 2008 DAR had received fishing reports showing that 27,062 pounds of Deep 7 bottomfish had been reported caught, however fishing reports submitted to DAR by January 30, 2009 showed that fishers had caught 80,984 pounds of Deep 7 by December 31, 2008. *This is an unofficial count.

Dear Commercial Bottomfish fishers and dealers-

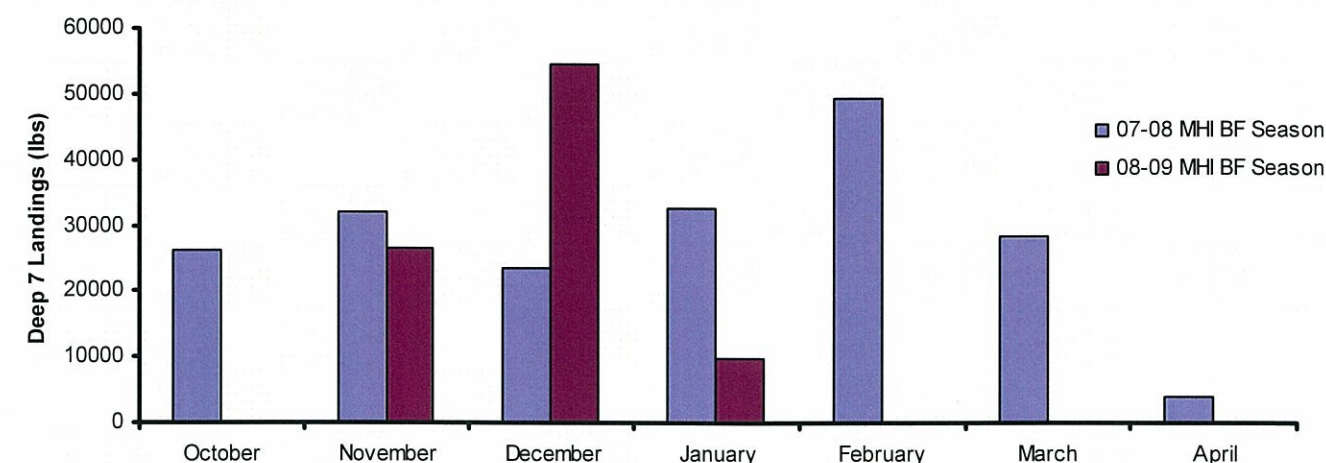
Please let us know what kind of information you would like to see in future newsletters. We welcome your feedback! **WHAT WOULD YOU LIKE TO SEE IN FUTURE NEWSLETTERS?** PLEASE CALL statistical staff member, Jessica Phelps, (808) 587-0594 or e-mail jessica.phelps@hawaii.gov. Any feedback about the newsletter, positive or negative, is greatly appreciated!

Mahalo!

DAR Statistical Unit

Thank you to everyone for your ideas and assistance in editing the Bottomfish Newsletter Volume 4! A special thanks to: Meagan Sundberg, Gerard Dinardo, Karen Underkoffler, NOAA Bottomfish Research Staff, Jo-Anne Kushima, Lauren Washington, Mark Sullivan, Francis Oishi, Reginald Kokubun, Michael Quach, Karl Brookins, Dan Polhemus, and The Bottomfish Outreach Team.

Editor: Jessica Phelps



Comparison of Deep 7 species reported caught during the 2007-2008 bottomfish season with the 2008-2009 season as of February 5, 2009. The 2008-2009 season opened on November 15, 2008. The 2007-2008 season opened October 1, 2007 and closed in federal waters on April 16, 2008. January 2009 is low because reports are not due until February 10, 2009. *This is an unofficial count.

BOTTOMFISH RESEARCH:

WHAT ARE FISHERIES SCIENTISTS DOING THAT WILL BENEFIT MHI BOTTOMFISH FISHERS?

Bottomfish tagging effort in the MHI

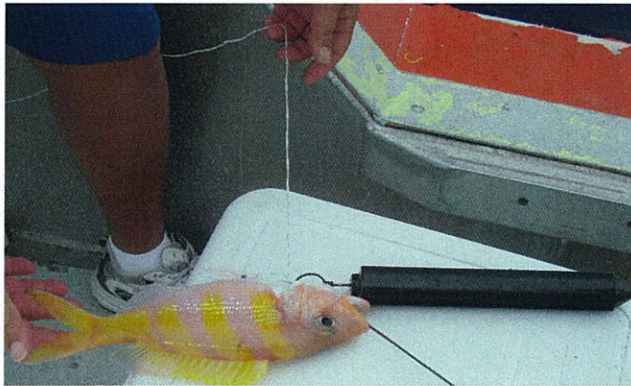
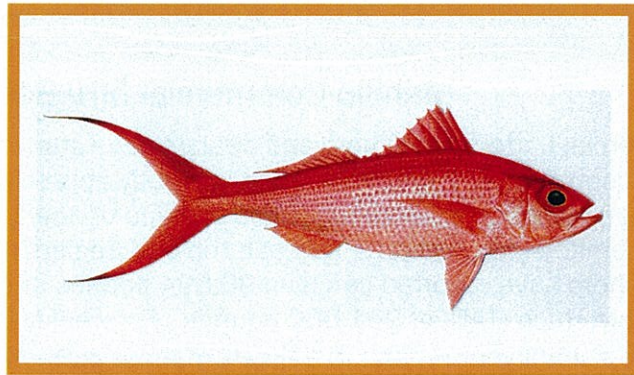


Photo by Kurt Kawamoto, NOAA
Clay Tam of DAR prepping a tagged gindai for release.

November 20, 2008 through December 4, 2008: a group of National Marine Fisheries Service scientists spent 13 days fishing for bottomfish aboard the Oscar Elton Sette (OES) National Oceanic and Atmospheric Association (NOAA) research vessel. Smaller safeboats equipped with bottomfish reels were launched from the OES. Traps were also deployed on five of those days in an effort to locate and obtain juvenile bottomfish specimens measuring in at 30cm or less. Larger fish caught incidentally were tagged and released using tags issued by the Pacific Islands Fisheries Group (PIFG). The bar graph on the right displays length frequency distributions of the bottomfish that were kept, tagged, and released during this cruise. The success of the tagging program is highly dependent upon fishermen participation to recover tagged individuals in order to track the history of the fish. Movement and growth patterns, how much the fish grew from the time of tagging to time of recapture, and how far it moved from the tagging site are all beneficial information for stock assessment.

-Meagan Sundberg, NOAA

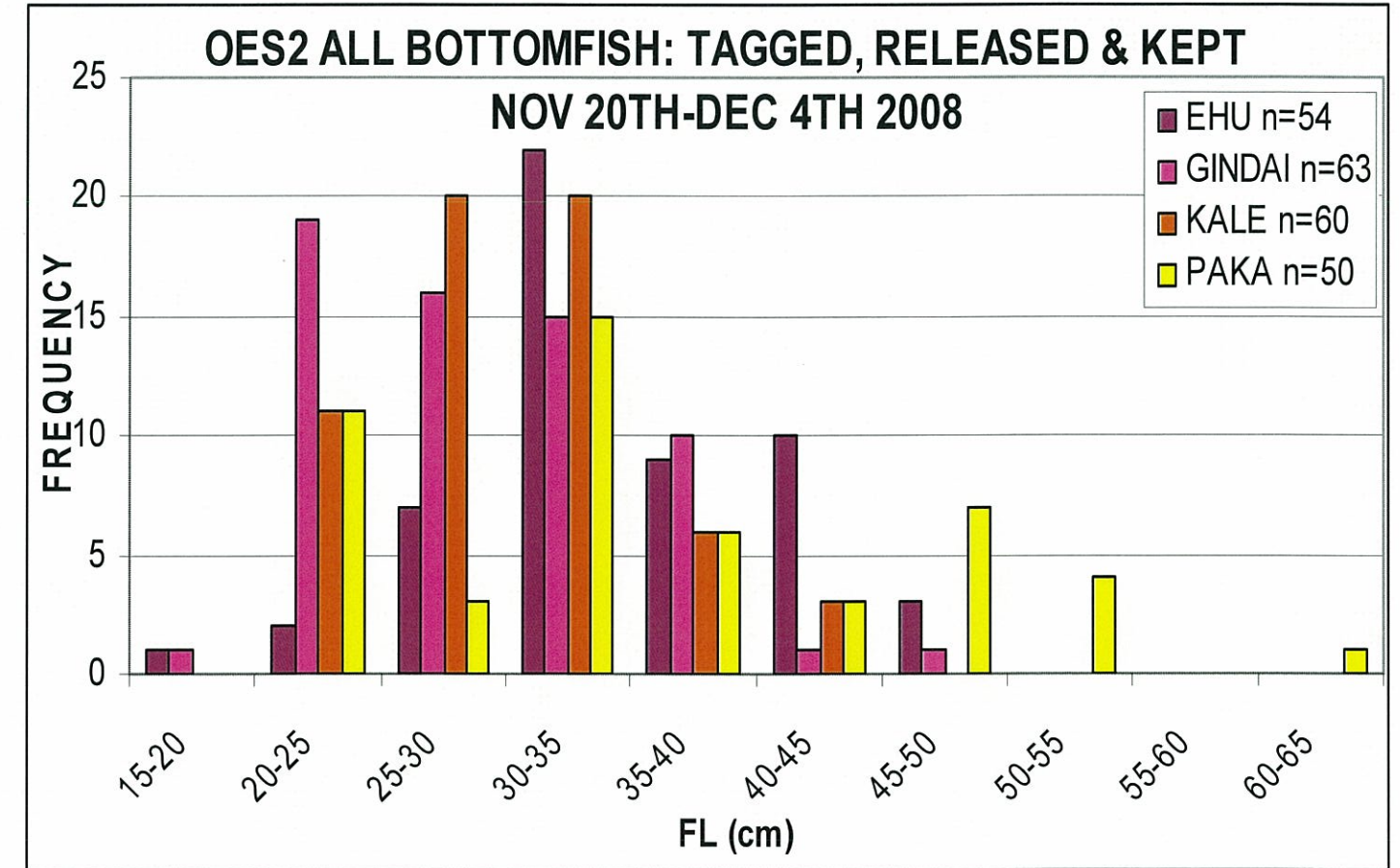


Catch a tagged bottomfish?

If you catch a tagged fish, please call the PIFG at 808-265-4962 with the following information: 1) Tag number, 2) Date of capture, 3) Time of capture, 4) Angler's name, 5) Location of capture (coordinates to the minute if possible to track migration), 6) Species, 7) Fork Length of fish (measurement from the nose to the V in the tail) and 8) Depth in fathoms.



Photo by Kurt Kawamoto, NOAA
Clay Tam of DAR releasing a tagged Gindai using a drop-shot weight.



Bottomfish life history study

The FDRP-Funded Hawaiian Archipelago Bottomfish Sampling Program was conducted from April 2007 through June 2008. The Pacific Island Fisheries Science Center's Fishery Biology and Stock Assessment Division of Aiea obtained bottomfish specimens from contracted fishermen fishing in the Main and Northwestern Hawaiian Islands. Numerous biological samples including gonads, dorsal spines, fin clips, muscle tissue, liver samples and otoliths were obtained from all Ehu, Gindai, Hapu'u, Onaga, Opakpaka, and Uku purchased. Collected fish covered a wide range of lengths between 10 and 115 cm in length dependent upon species. The information collected from these specimens provides means to facilitate age and growth studies. In the future, the collected muscle tissue and liver samples will be used to determine the diet of the fishes through isotope analysis. Using this data, models can be generated that allow stock assessment scientists to estimate the biomass of fish in a given area, MHI and NWHI in this case, and evaluate sustainable yield of current fish populations to prevent overfishing from occurring. The project turned out to be a success thanks to all the participating fishermen; lots of valuable information was obtained.

-Meagan Sundberg, NOAA